

Ikshu 100X – FAST ETHRNET 10/100BASE-TX TO 100BASE-FX

Description

100X Converter from Ikshu is compact size units and fulfills the FCC emission standards. This converter converts 10/100Base-TX to 100Base-FX with LED diagnostics for Power, Activity, Link and Full Duplex / Half Duplex operation. All of are fully compliant with the IEEE 802.3 & 802.3u Fast Ethernet standards and feature one STP-RJ45 10/100Base-TX port as well as one Fiber Optic 100Base-FX (SC port). The 100M is used in applications where multimode fiber is installed while the 100-S (SM-20/50/60/80/100) can be used where single mode fiber cables are in use. In Single mode applications distances upto 20,000m/30,000m can be achieved. Each unit is powered by an external power supply. Installation of the Fast Ethernet converter is simple and straightforward. The powerful features are as 10/100 Auto Negotiation, Auto cross over for TP port, Fiber Link Alarm, Voltage supervisor, and support switch mode & pure converter mode.

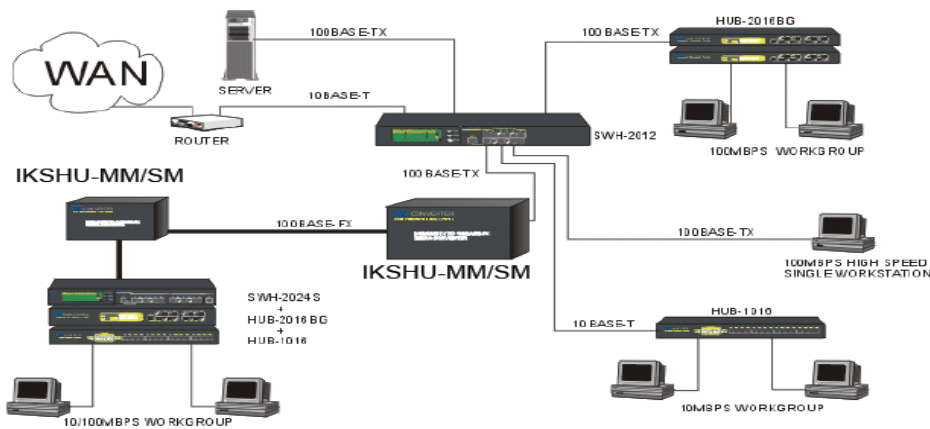
- 10/100 Base-TX to 100Base-FX Converter
- Store and Forward switching Mechanism
- 10/100BASE-T to 100BASE-FX media conversion.
- SC connector for 100BASE-FX fiber port
- Comply to IEEE 802.3, 802.3u
- MDI/MDIX Auto Cross supported
- DIP switch configuration for copper Ethernet port.
- Fiber Link Alarm Function
- Auto- Negotiation or Manual mode setting of speed & Duplex Mode
- LED Indication
 - Power, FDX
 - TP 100, TP Link/ Activity
 - FX 100, FX Link/ Activity



Specifications

Type	Description
Standards	IEEE 802.3, IEEE802.3u
Switching Mechanism	Store and Forward
Mac Table	1k Entries
Forward and Filter rate	10BASE-T 14,800 pps, 100BASE –FX 148,800 pps
Led	Power, FDX, TP 100, TP Link/ACT, Fiber 100, Fiber Link/ACT
Power	DC 5V, 1.6A
Power Consumption	3.5W
Temperature	0.6kg
Humidity	Operating: 0 – 50 C, Storage: -20 – 60 C
Emission	FCC/CE Class A

Block Diagram



Ordering Information

Part Number	Type	Distance Supported
Ikshu 100S	Singlemode	20km
Ikshu 100M	Multimode	2km

TEXONIC

New No: 72 Royapettah High Road,
 Royapettah, Chennai-600014.
 Tamil Nadu, India.
 PH-044-42118608

Email: networking@texonic.com
 Website: www.texonic.com